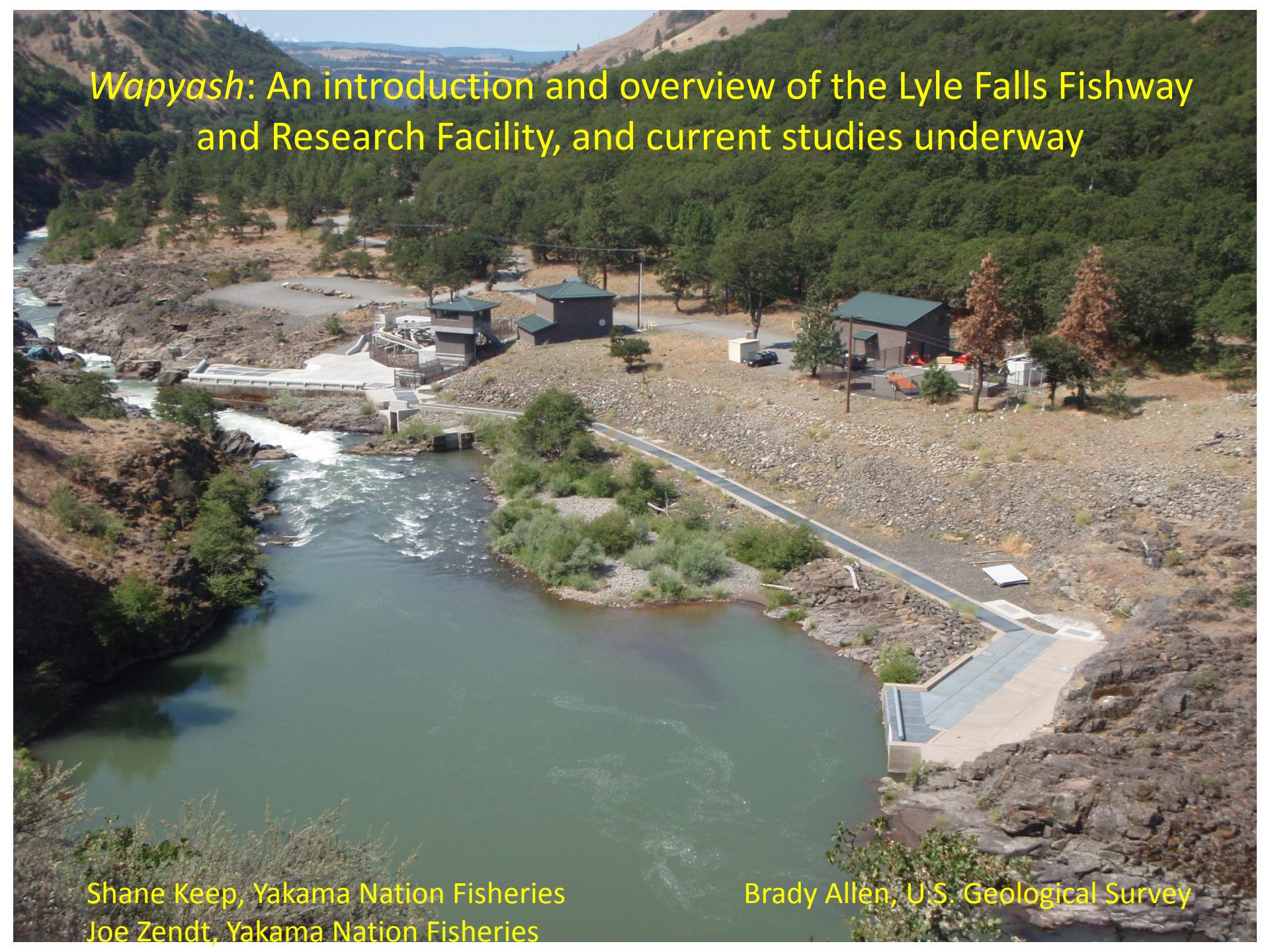


Wapyash: An introduction and overview of the Lyle Falls Fishway and Research Facility, and current studies underway

Shane Keep, Yakama Nation Fisheries
Joe Zendt, Yakama Nation Fisheries

Brady Allen, U.S. Geological Survey













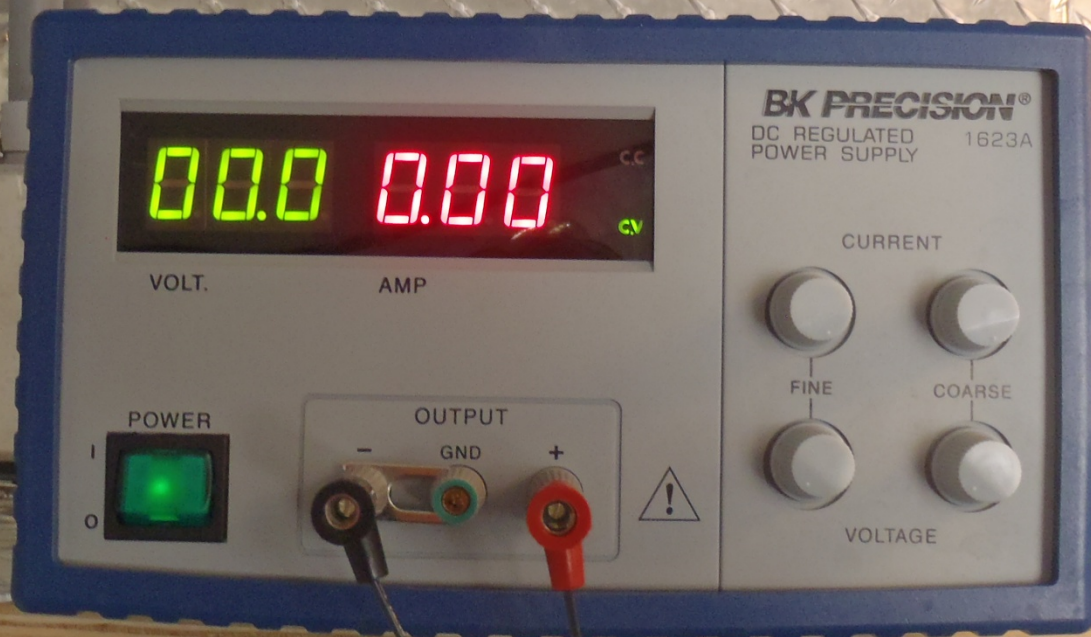












00.0

0.00

BK PRECISION[®]
DC REGULATED
POWER SUPPLY 1623A

VOLT.

AMP

CURRENT



FINE

COARSE

POWER



OUTPUT

-

GND

+



VOLTAGE



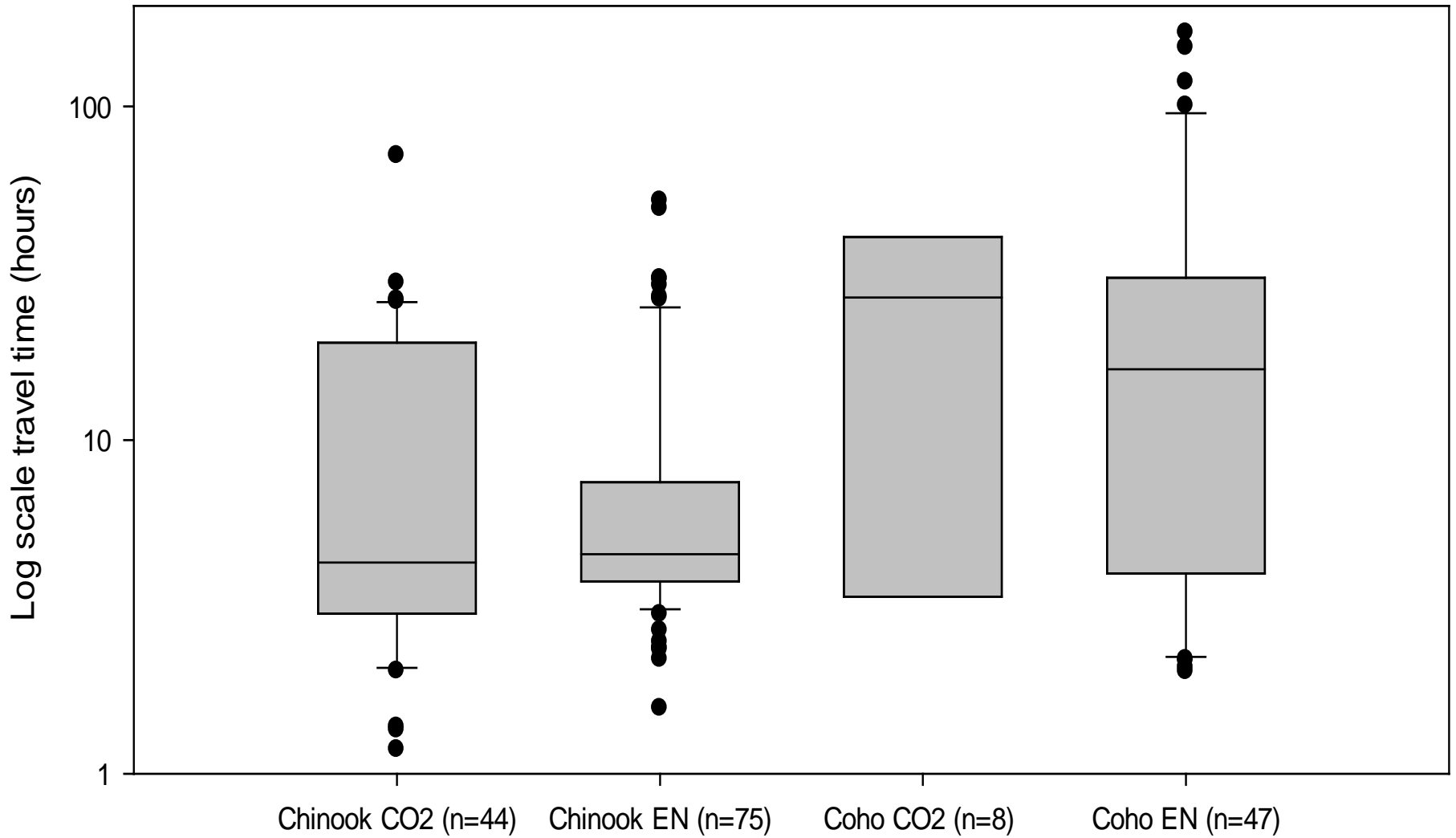




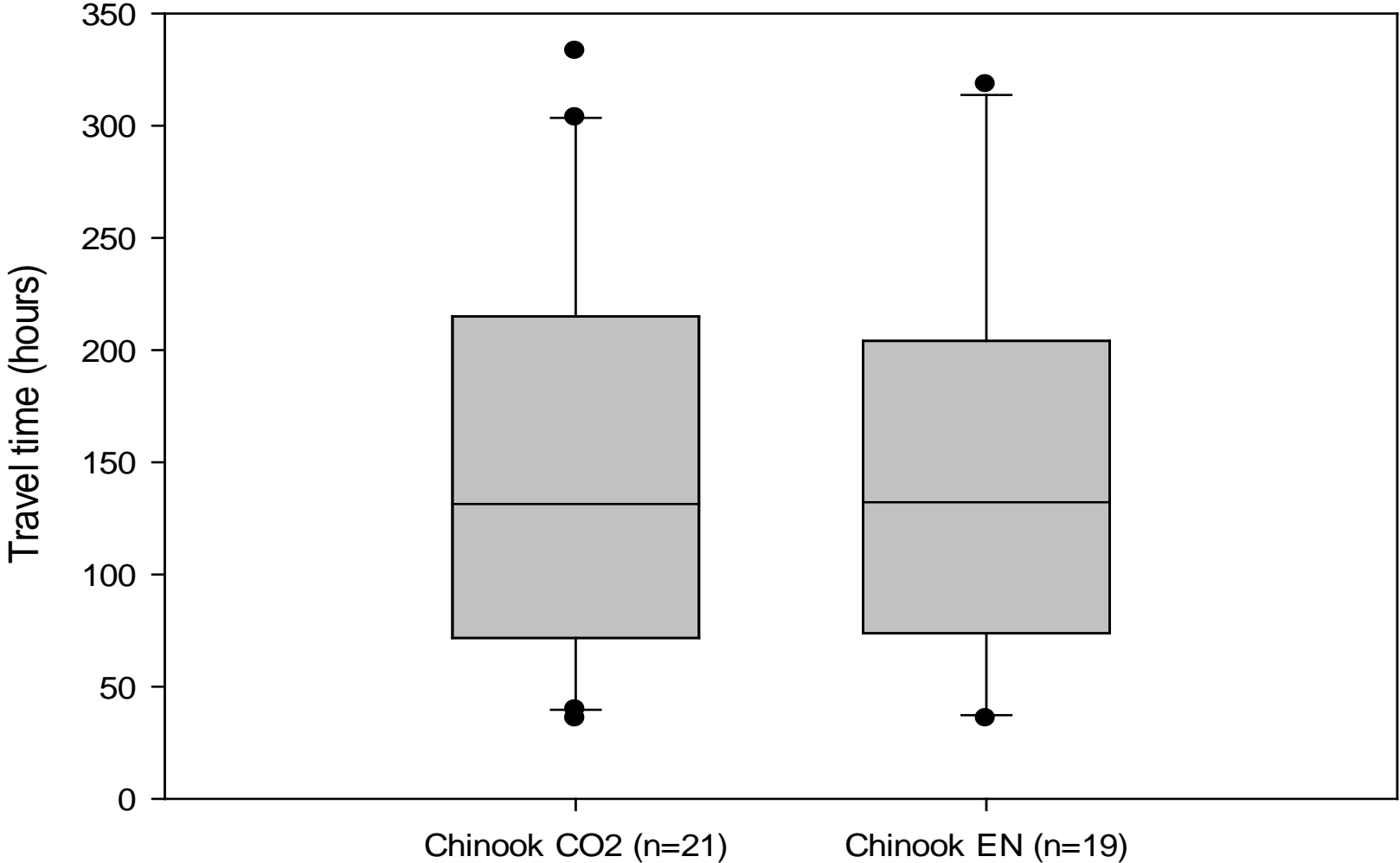




Travel time of PIT-tagged fish from release to detection in fishway



Travel time of radio-tagged fish from release to river mile 9



Acknowledgements:

Yakama Nation Fisheries:

Michael Babcock

Bennie Martinez

Joe Zendt

William Sharp

Jerod Bartholomew

Gregg Knott

Scott Spino

Jason Rau and Klickitat Hatchery staff

U.S. Geological Survey:

Brady Allen

Leroy Sutton