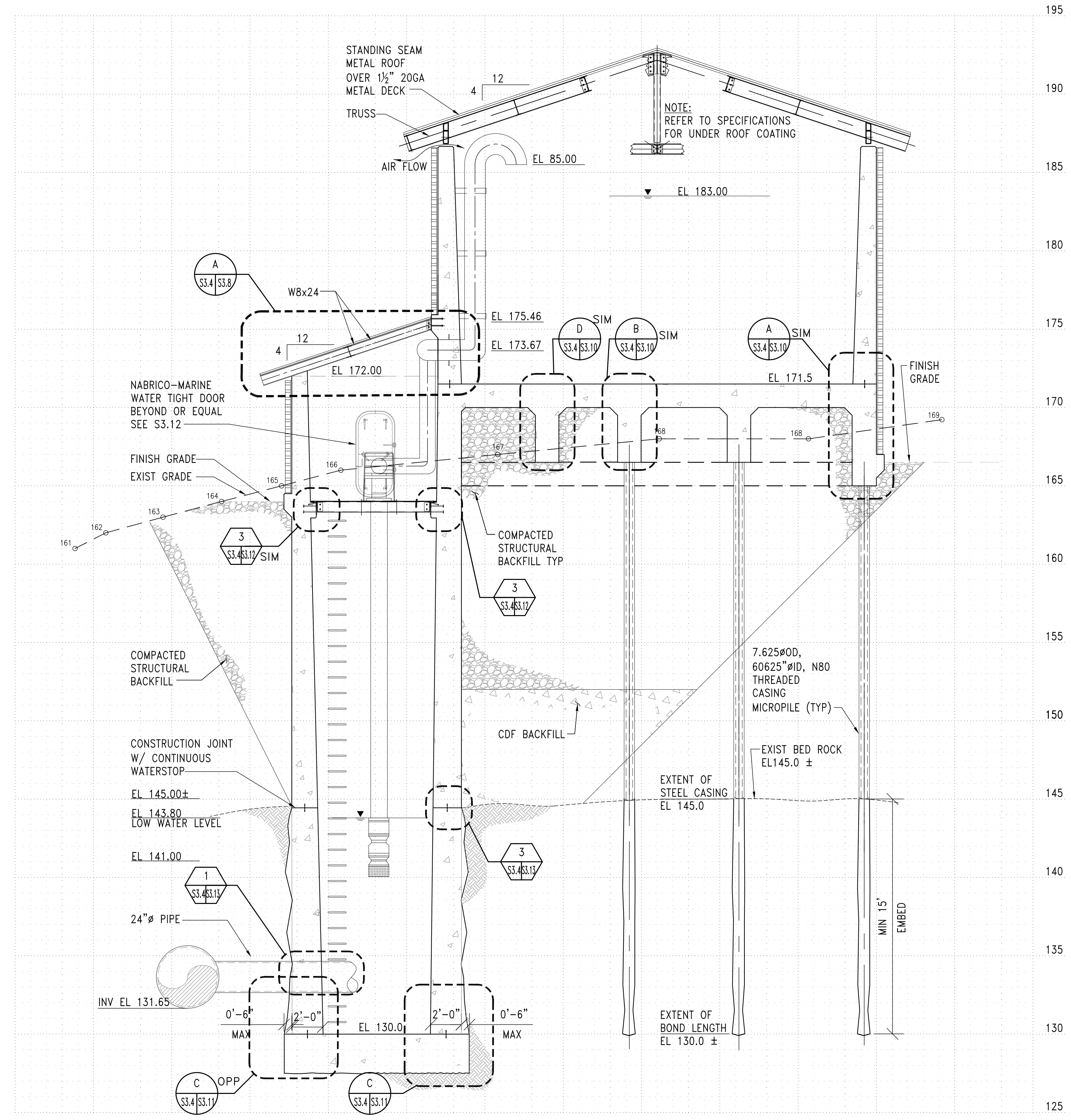


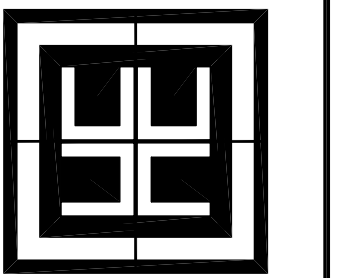
VERIFY SCALE
 BAR IS ONE INCH ON ORIGINAL DRAWING
 IF NOT ONE INCH ON THIS SHEET, ADJUST SCALES ACCORDINGLY



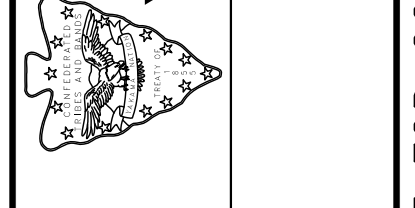
SECTION C
 FISH LIFT RESERVOIR
 SCALE: 1/4" = 1'-0"

SCALE:	AS NOTED	CHK BY:	JRH	DRW BY:	ELL	REF:
REVISION	DESCRIPTION	DATE				

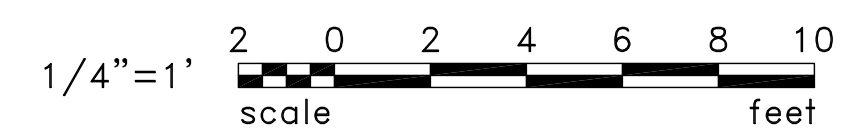
HARBOR CONSULTING ENGINEERS
 ENGINEERS • PLANNERS • SURVEYORS
 3006 FUHRMAN AVENUE EAST
 SEATTLE WASHINGTON 98102
 PHONE: (206) 709-2397



LYLE FALLS FISHWAY IMPROVEMENTS
YAKAMA NATION, TOPPENISH WASHINGTON
 FISH LIFT RESERVOIR
 SECTIONS - 2



JOB NO.	08032.02
DATE:	01.05.10
SHEET:	81 OF XX
DWG.#	S3.4



BID SET | NOT FOR CONSTRUCTION