

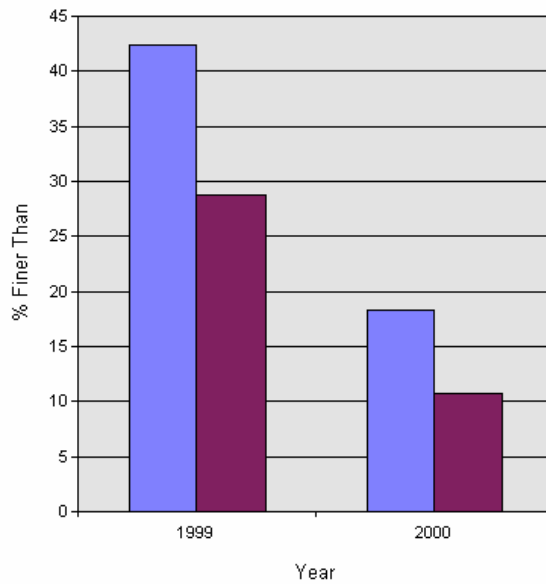
# YKFP Klickitat Subbasin Sediment Monitoring Report



## Site Name: E. Prong Little Klickitat at Box Canyon Road

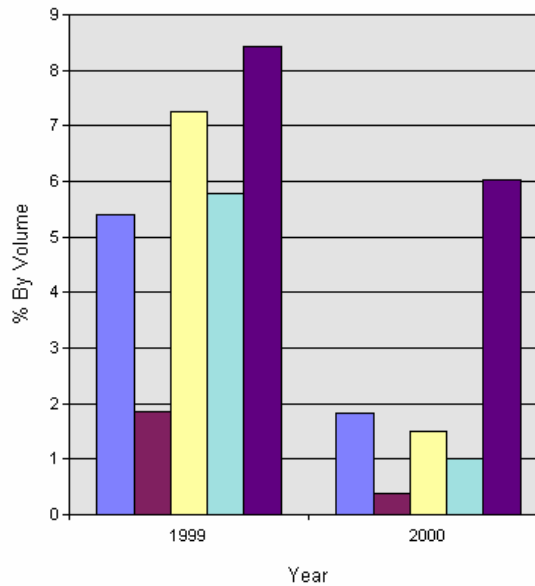
Year:	%<75.0m	%<26.5mm	%<13.5m	%<9.5mm	%<6.73mm	%<3.35mm	%<1.7mm	%<1.0mm	%<0.85mm	%<0.425m	%<0.212m
1999	91.4	62.2	50.5	46.3	42.4	35.4	28.7	23.3	21.5	14.2	8.4
2000	96.0	44.8	26.6	22.0	18.3	13.5	10.8	8.9	8.5	7.0	6.0

% Finer



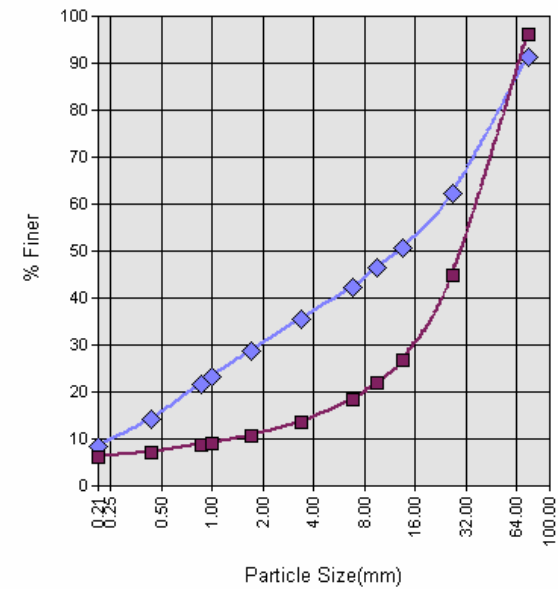
■ 6.75 ■ 1.7

Distribution of Fines by Class



■ 1.0 - 1.7 ■ .85 - 1.0 ■ .425 - .85  
■ 2.12 - .425 ■ <.212

Cumulative Frequency Distribution



◆ 1999 ■ 2000

# YKFP Klickitat Subbasin Sediment Monitoring Report

Thursday, September 28, 2006



Page