

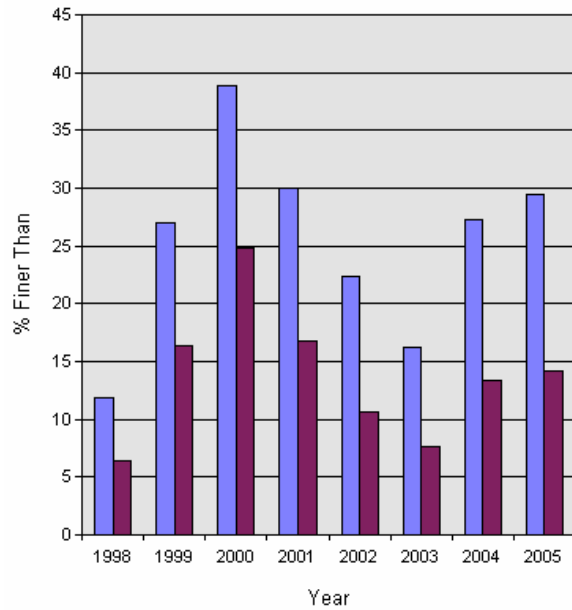
YKFP Klickitat Subbasin Sediment Monitoring Report



Site Name: Klickitat R. near Cow Camp

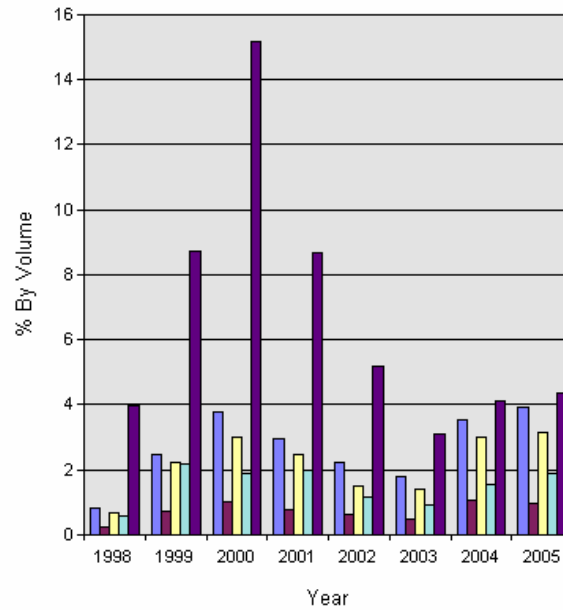
| Year: | %<75.0m | %<26.5mm | %<13.5m | %<9.5mm | %<6.73mm | %<3.35mm | %<1.7mm | %<1.0mm | %<0.85mm | %<0.425m | %<0.212m |
|-------|---------|----------|---------|---------|----------|----------|---------|---------|----------|----------|----------|
| 1998 | 97.8 | 47.4 | 23.6 | 16.3 | 11.8 | 8.8 | 6.4 | 5.5 | 5.2 | 4.6 | 4.0 |
| 1999 | 98.1 | 57.7 | 38.8 | 32.3 | 27.0 | 20.5 | 16.3 | 13.9 | 13.1 | 10.9 | 8.7 |
| 2000 | 93.1 | 67.0 | 49.8 | 43.7 | 38.8 | 30.9 | 24.8 | 21.1 | 20.0 | 17.1 | 15.2 |
| 2001 | 97.1 | 62.6 | 42.3 | 35.5 | 30.0 | 22.4 | 16.8 | 13.9 | 13.1 | 10.7 | 8.7 |
| 2002 | 91.7 | 55.2 | 34.6 | 27.8 | 22.3 | 15.2 | 10.7 | 8.5 | 7.8 | 6.3 | 5.2 |
| 2003 | 90.4 | 45.0 | 26.4 | 20.6 | 16.2 | 10.8 | 7.6 | 5.9 | 5.4 | 4.0 | 3.1 |
| 2004 | 88.4 | 56.2 | 39.3 | 32.8 | 27.3 | 19.3 | 13.3 | 9.7 | 8.6 | 5.6 | 4.1 |
| 2005 | 87.0 | 58.3 | 41.7 | 35.3 | 29.4 | 20.8 | 14.2 | 10.3 | 9.4 | 6.2 | 4.3 |

% Finer



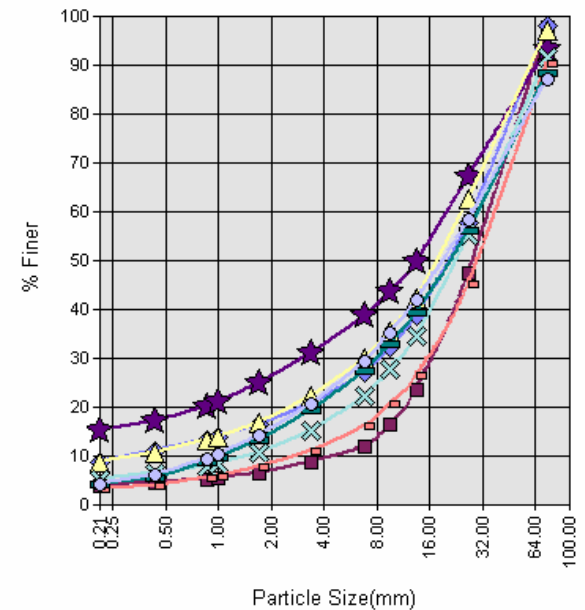
■ 6.75 ■ 1.7

Distribution of Fines by Class



■ 1.0 - 1.7 ■ .85 - 1.0 ■ .425 - .85
■ 2.12 - .425 ■ <.212

Cumulative Frequency Distribution



■ 1998 ◆ 1999 ★ 2000
▲ 2001 × 2002 □ 2003
— 2004 ○ 2005

Data provided by Yakama Nation Fisheries 2007. Do not reproduce without permission of YN.