

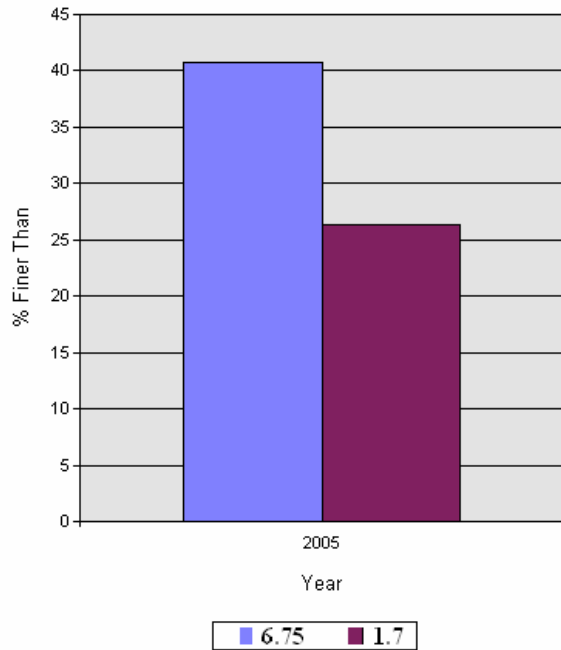
YKFP Klickitat Subbasin Sediment Monitoring Report



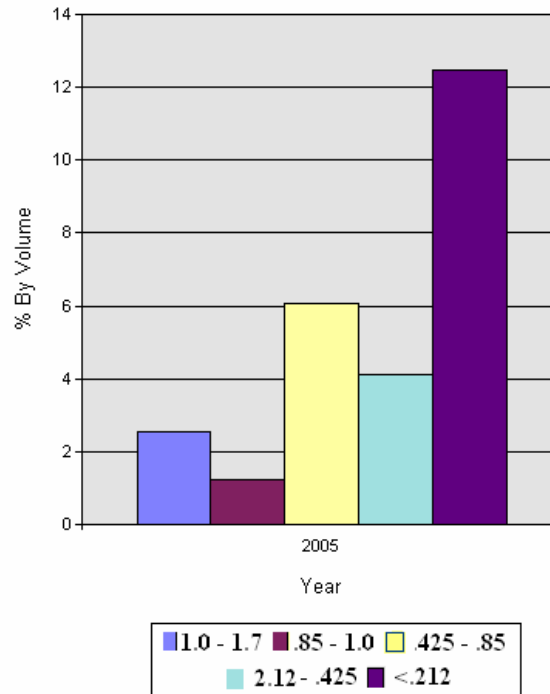
Site Name: White Creek meadow below Tepee Creek confluence

Year:	%<75.0m	%<26.5mm	%<13.5m	%<9.5mm	%<6.73mm	%<3.35mm	%<1.7mm	%<1.0mm	%<0.85mm	%<0.425m	%<0.212m
2005	100.0	78.2	55.8	47.7	40.8	31.9	26.4	23.9	22.7	16.6	12.5

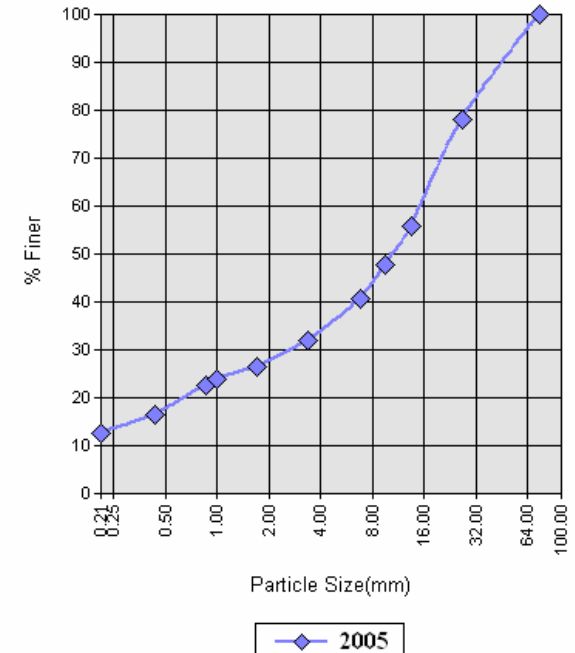
% Finer



Distribution of Fines by Class



Cumulative Frequency Distribution



YKFP Klickitat Subbasin Sediment Monitoring Report

Wednesday, September 27, 2006



Page