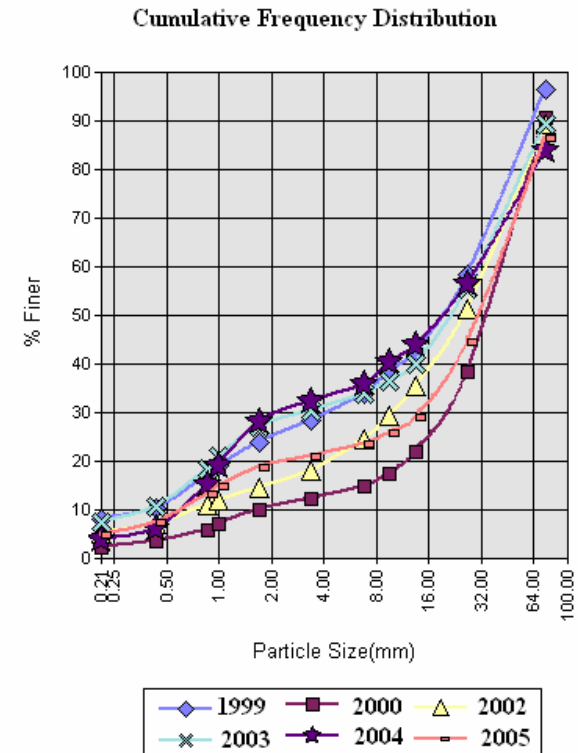
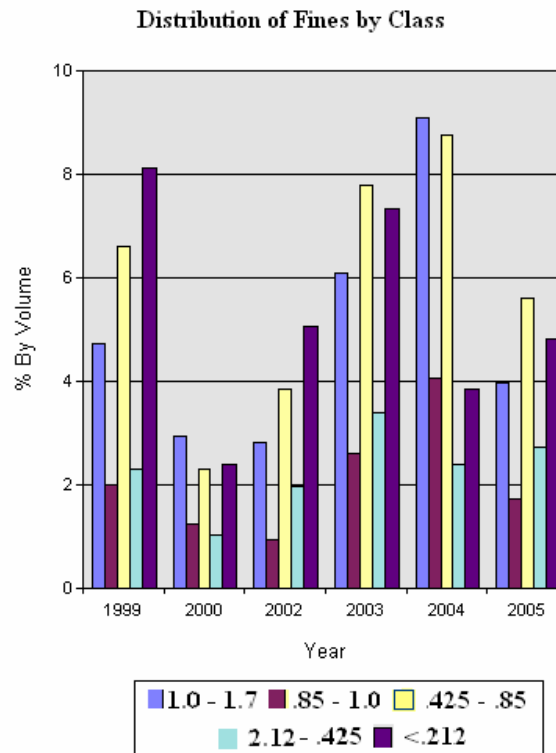
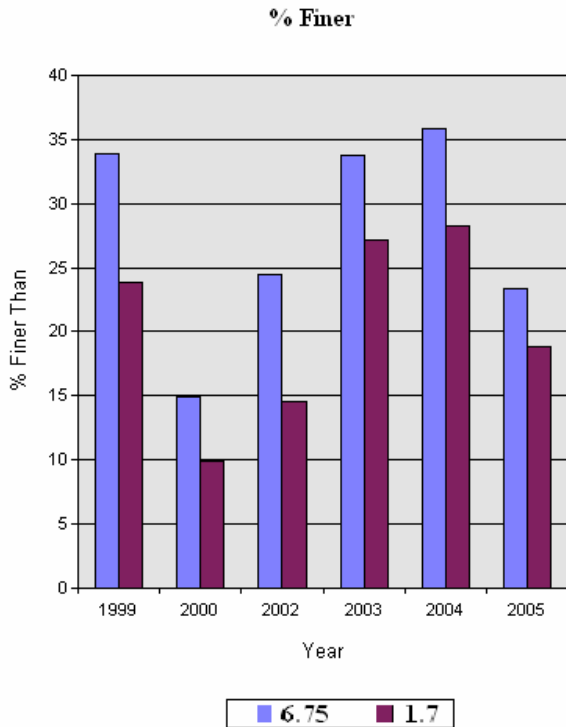


YKFP Klickitat Subbasin Sediment Monitoring Report



Site Name: Klickitat R. near Stinson Flats boat ramp

Year:	%<75.0m	%<26.5mm	%<13.5m	%<9.5mm	%<6.73mm	%<3.35mm	%<1.7mm	%<1.0mm	%<0.85mm	%<0.425m	%<0.212m
1999	96.3	58.5	42.6	38.3	33.9	28.5	23.8	19.0	17.0	10.4	8.1
2000	90.8	38.3	22.0	17.4	14.9	12.3	9.9	7.0	5.7	3.4	2.4
2002	89.5	51.2	35.6	29.5	24.5	18.2	14.6	11.8	10.9	7.0	5.0
2003	89.4	55.5	40.1	36.4	33.8	30.4	27.2	21.1	18.5	10.7	7.3
2004	84.0	56.5	43.9	40.3	35.8	32.3	28.2	19.0	15.0	6.2	3.8
2005	86.6	44.6	29.0	25.7	23.4	20.9	18.8	14.9	13.1	7.5	4.8



Data provided by Yakama Nation Fisheries 2007. Do not reproduce without permission of YN.

YKFP Klickitat Subbasin Sediment Monitoring Report

Thursday, September 28, 2006



Page