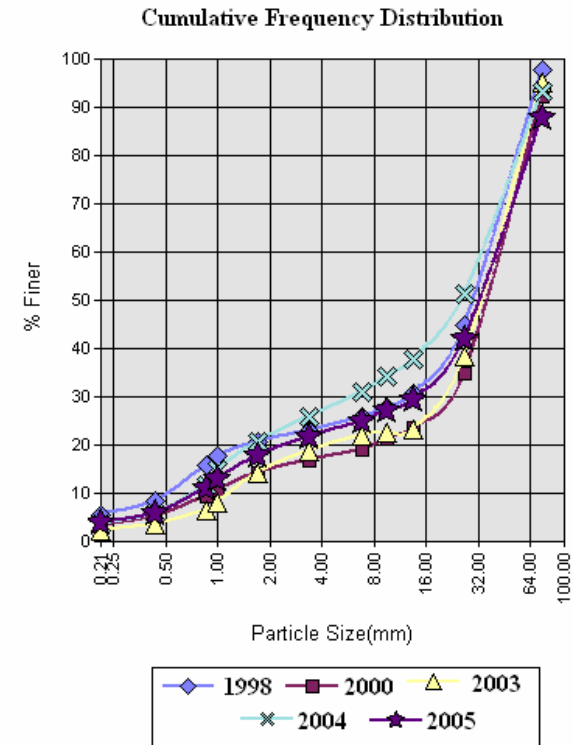
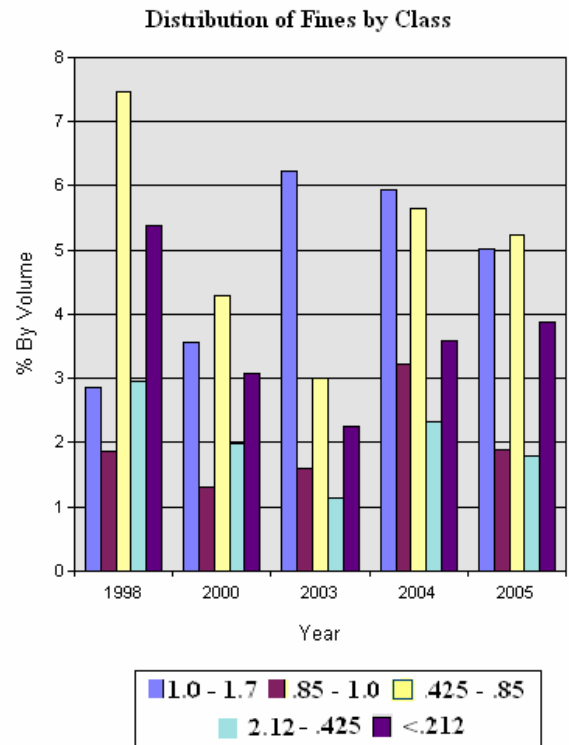
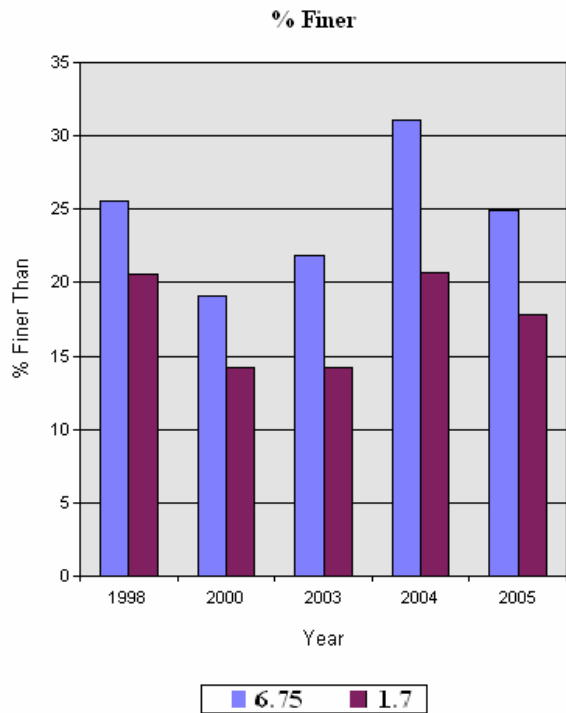


# YKFP Klickitat Subbasin Sediment Monitoring Report



## Site Name: Klickitat R. near Leidl Bridge

Year:	%<75.0m	%<26.5mm	%<13.5m	%<9.5mm	%<6.73mm	%<3.35mm	%<1.7mm	%<1.0mm	%<0.85mm	%<0.425m	%<0.212m
1998	97.6	44.8	30.8	27.6	25.6	22.9	20.6	17.6	15.8	8.3	5.4
2000	92.2	34.8	23.7	21.2	19.1	16.9	14.2	10.7	9.3	5.0	3.1
2003	95.0	38.3	23.1	22.5	21.9	18.8	14.2	8.0	6.4	3.4	2.3
2004	93.3	51.4	37.8	34.3	31.1	25.7	20.7	14.8	11.5	5.9	3.6
2005	87.6	41.8	29.3	27.0	24.9	21.5	17.8	12.8	10.9	5.7	3.9



Data provided by Yakama Nation Fisheries 2007. Do not reproduce without permission of YN.

# YKFP Klickitat Subbasin Sediment Monitoring Report

Thursday, September 28, 2006



Page