

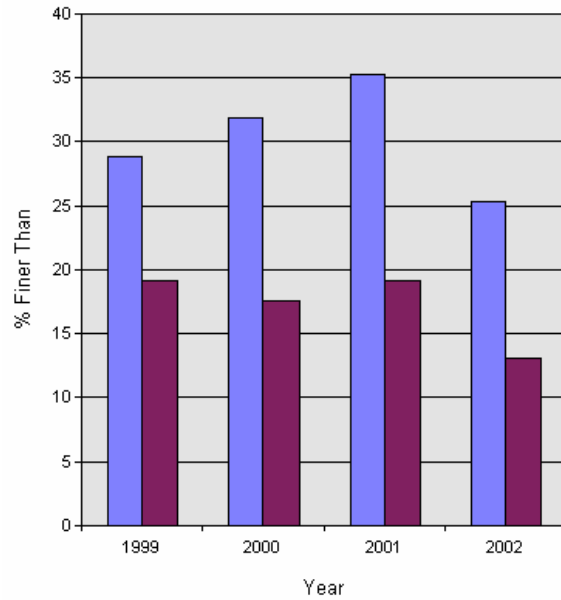
# YKFP Klickitat Subbasin Sediment Monitoring Report



Site Name: Klickitat R. near Elkhorn Cr.

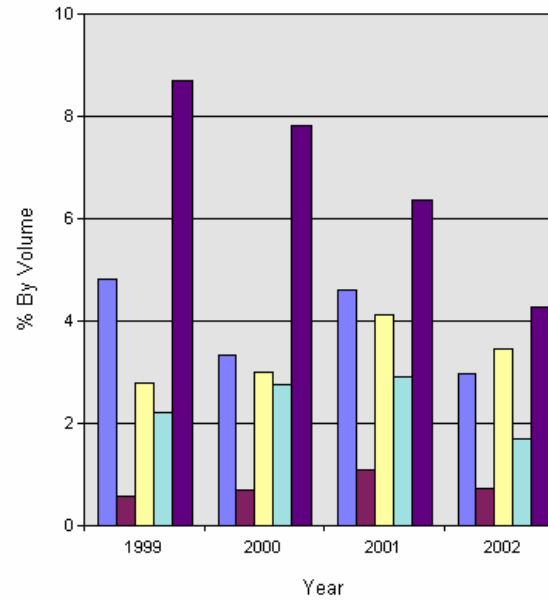
Year:	%<75.0m	%<26.5mm	%<13.5m	%<9.5mm	%<6.73mm	%<3.35mm	%<1.7mm	%<1.0mm	%<0.85mm	%<0.425m	%<0.212m
1999	96.5	54.9	38.7	33.4	28.9	23.7	19.1	14.3	13.7	10.9	8.7
2000	96.7	60.9	42.5	37.0	31.9	24.6	17.6	14.3	13.6	10.6	7.8
2001	95.2	64.2	46.9	40.7	35.3	26.8	19.1	14.5	13.4	9.3	6.3
2002	92.6	55.1	35.9	30.3	25.3	18.4	13.1	10.1	9.4	6.0	4.3

% Finer



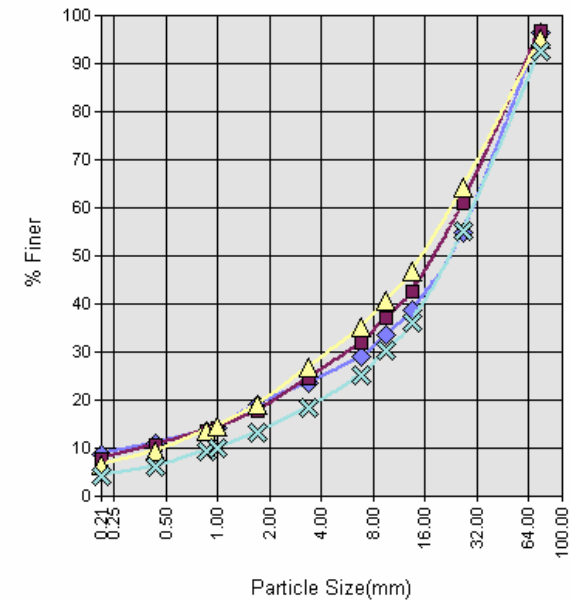
■ 6.75 ■ 1.7

Distribution of Fines by Class



■ 1.0 - 1.7 ■ .85 - 1.0 ■ .425 - .85  
■ 2.12 - .425 ■ <.212

Cumulative Frequency Distribution



◆ 1999 ■ 2000  
▲ 2001 × 2002

Data provided by Yakama Nation Fisheries 2007. Do not reproduce without permission of YN.

# YKFP Klickitat Subbasin Sediment Monitoring Report

Thursday, September 28, 2006



Page