

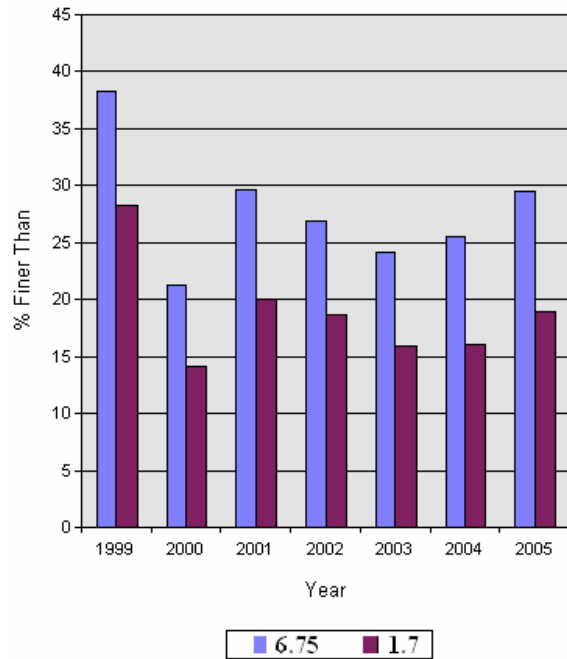
YKFP Klickitat Subbasin Sediment Monitoring Report



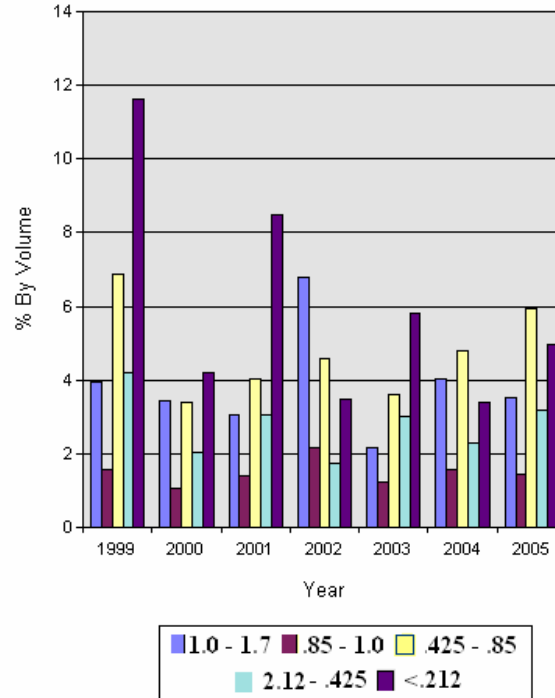
Site Name: Klickitat R. near Hwy 142 below Little Klickitat

Year:	%<75.0m	%<26.5mm	%<13.5m	%<9.5mm	%<6.73mm	%<3.35mm	%<1.7mm	%<1.0mm	%<0.85mm	%<0.425m	%<0.212m
1999	88.1	60.1	47.6	42.6	38.3	32.8	28.2	24.3	22.7	15.8	11.6
2000	91.9	42.7	28.4	24.0	21.2	17.6	14.1	10.6	9.6	6.2	4.2
2001	88.7	56.4	40.2	34.5	29.7	23.9	20.0	17.0	15.6	11.5	8.5
2002	87.5	49.4	34.7	30.3	26.9	22.7	18.7	11.9	9.8	5.2	3.5
2003	82.9	49.3	32.8	28.0	24.2	19.3	15.9	13.6	12.4	8.8	5.8
2004	83.7	46.5	33.9	29.6	25.5	20.0	16.1	12.1	10.5	5.7	3.4
2005	86.5	54.6	39.8	34.6	29.5	23.4	19.0	15.5	14.1	8.1	4.9

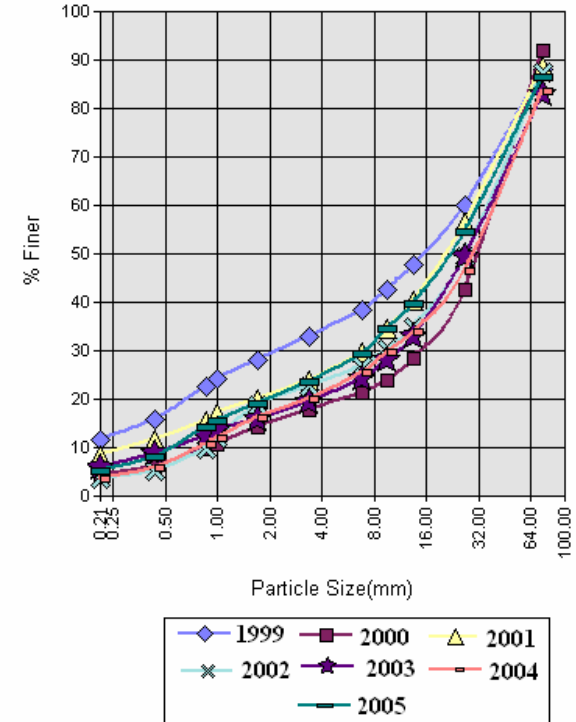
% Finer



Distribution of Fines by Class



Cumulative Frequency Distribution



Data provided by Yakama Nation Fisheries 2007. Do not reproduce without permission of YN.