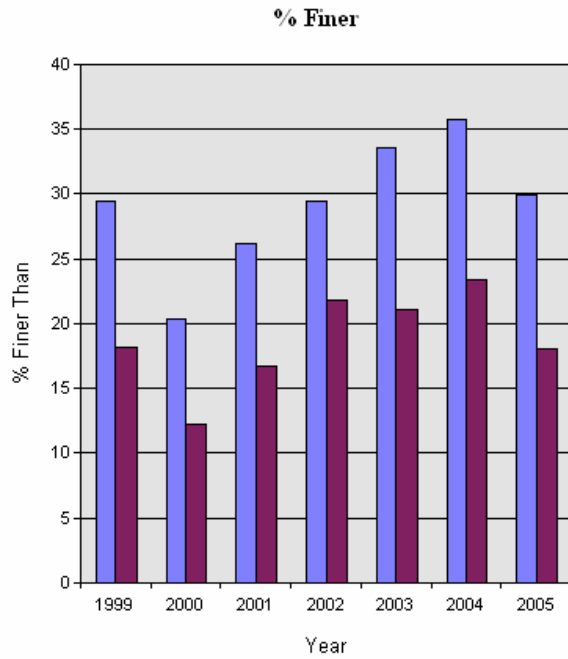


YKFP Klickitat Subbasin Sediment Monitoring Report

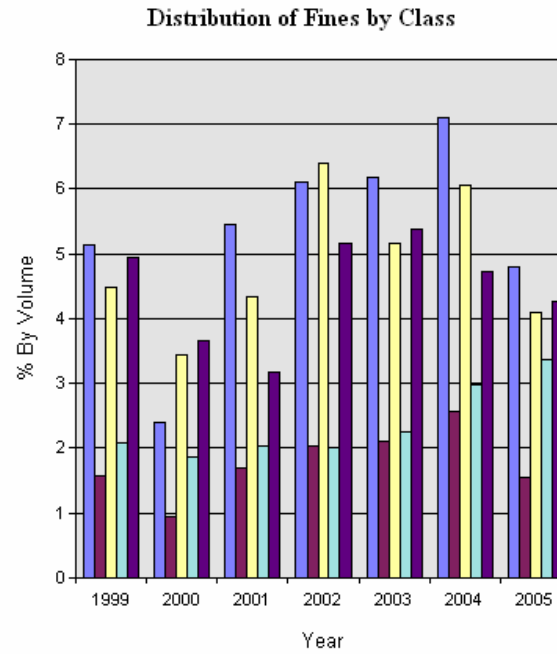


Site Name: Klickitat R. downstream of White Cr.

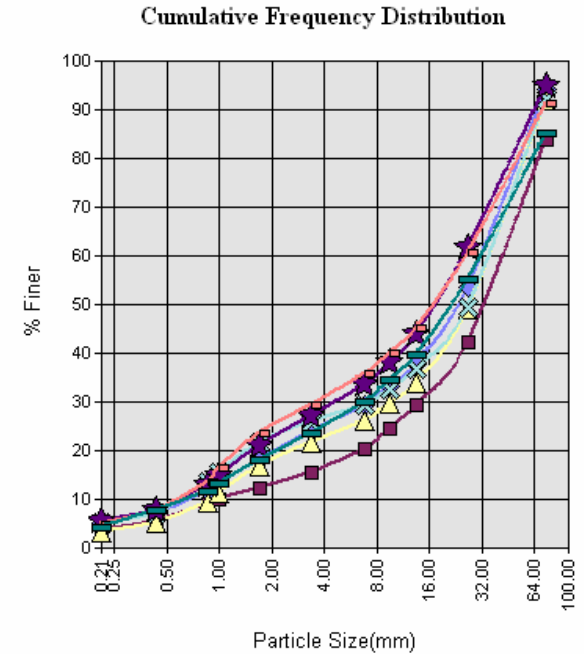
Year:	%<75.0m	%<26.5mm	%<13.5m	%<9.5mm	%<6.73mm	%<3.35mm	%<1.7mm	%<1.0mm	%<0.85mm	%<0.425m	%<0.212m
1999	94.2	53.6	37.9	33.2	29.5	23.8	18.2	13.1	11.5	7.0	4.9
2000	83.8	42.4	29.3	24.4	20.4	15.4	12.3	9.9	9.0	5.5	3.7
2001	92.0	49.1	34.0	29.8	26.2	21.6	16.7	11.2	9.5	5.2	3.2
2002	92.4	49.5	36.9	32.6	29.5	25.9	21.8	15.6	13.6	7.2	5.2
2003	94.9	61.5	43.8	38.2	33.6	27.2	21.1	14.9	12.8	7.6	5.4
2004	91.2	60.5	45.1	40.1	35.8	29.6	23.4	16.3	13.7	7.7	4.7
2005	85.2	55.2	39.9	34.4	29.9	23.4	18.1	13.3	11.7	7.6	4.3



■ 6.75 ■ 1.7



■ 1.0 - 1.7 ■ .85 - 1.0 ■ .425 - .85
■ 2.12 - .425 ■ <.212



◆ 1999 ■ 2000 ▲ 2001
× 2002 ☆ 2003 — 2004
— 2005

Data provided by Yakama Nation Fisheries 2007. Do not reproduce without permission of YN.

Thursday, September 28, 2006

YKFP Klickitat Subbasin Sediment Monitoring Report

Page 1 of



Data provided by Yakama Nation Fisheries 2007. Do not reproduce without permission of YN.