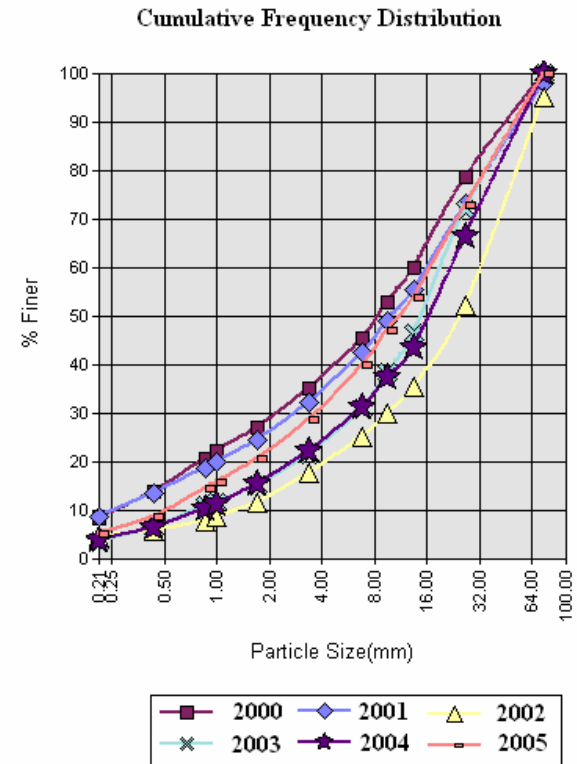
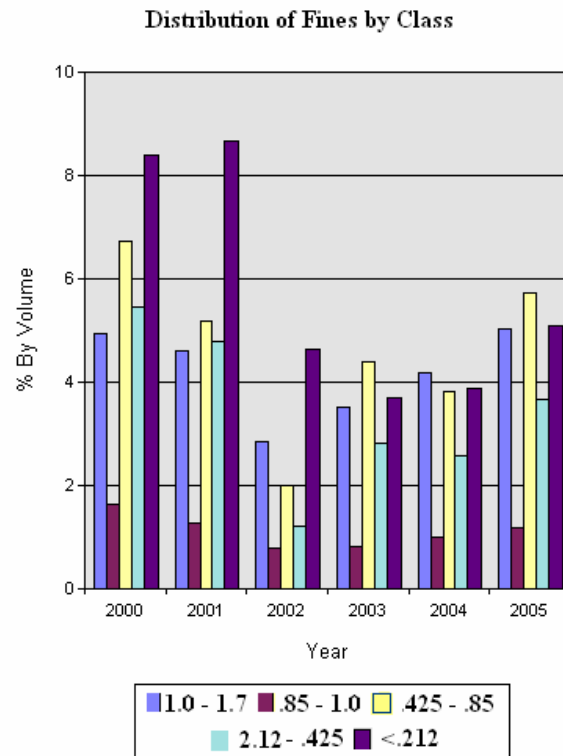
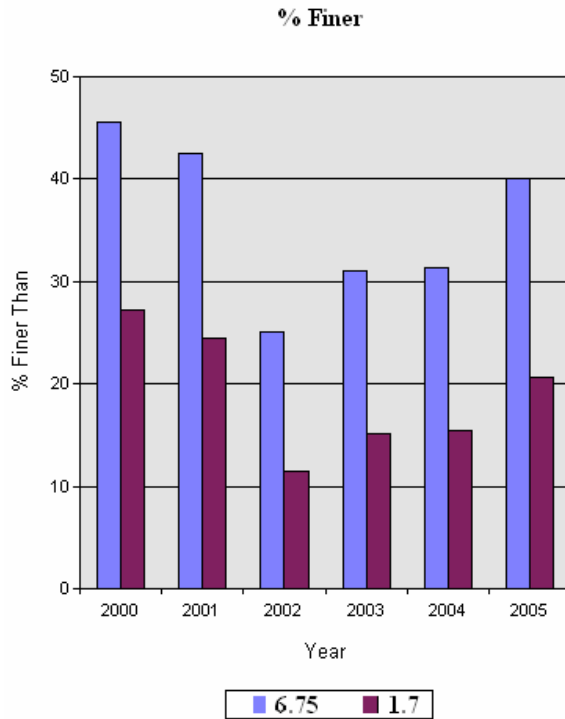


# YKFP Klickitat Subbasin Sediment Monitoring Report



Site Name: Diamond Fork in upper meadows near cabin

Year:	%<75.0m	%<26.5mm	%<13.5m	%<9.5mm	%<6.73mm	%<3.35mm	%<1.7mm	%<1.0mm	%<0.85mm	%<0.425m	%<0.212m
2000	100.0	78.7	60.1	52.9	45.6	35.1	27.2	22.2	20.6	13.8	8.4
2001	98.2	73.1	55.4	48.9	42.5	32.4	24.5	19.9	18.6	13.4	8.7
2002	95.0	52.4	35.6	30.1	25.1	17.7	11.5	8.6	7.8	5.8	4.6
2003	100.0	72.0	46.4	38.3	31.1	21.7	15.2	11.7	10.9	6.5	3.7
2004	100.0	66.4	43.7	37.5	31.4	22.3	15.5	11.3	10.3	6.4	3.9
2005	100.0	72.8	53.8	47.0	40.1	28.8	20.7	15.7	14.5	8.8	5.1



Data provided by Yakama Nation Fisheries 2007. Do not reproduce without permission of YN.

# YKFP Klickitat Subbasin Sediment Monitoring Report

Thursday, September 28, 2006



Page