

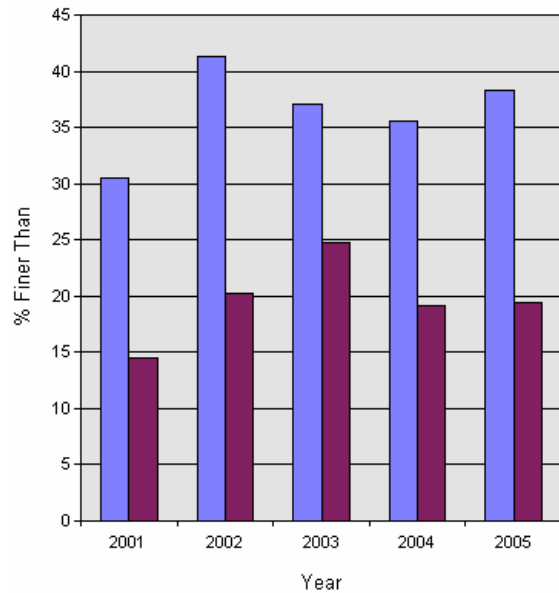
YKFP Klickitat Subbasin Sediment Monitoring Report



Site Name: Diamond Fork - "Bottom of Meadows"

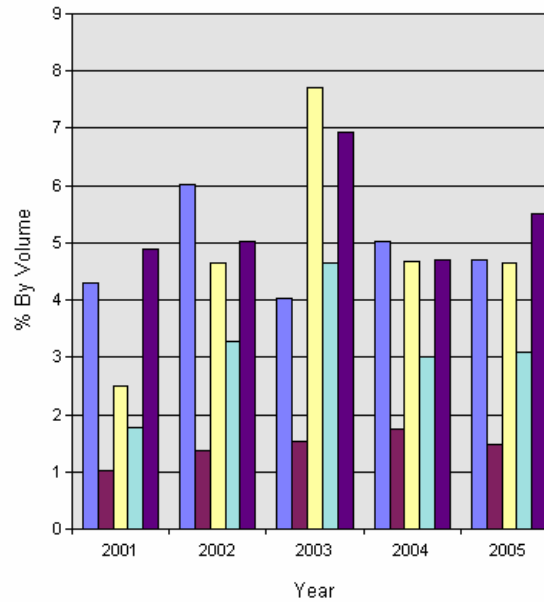
Year:	%<75.0m	%<26.5mm	%<13.5m	%<9.5mm	%<6.73mm	%<3.35mm	%<1.7mm	%<1.0mm	%<0.85mm	%<0.425m	%<0.212m
2001	90.4	57.4	41.5	35.8	30.5	21.9	14.5	10.2	9.2	6.7	4.9
2002	100.0	76.6	56.3	48.7	41.3	29.6	20.3	14.3	12.9	8.3	5.0
2003	96.0	61.7	47.2	42.0	37.1	30.1	24.8	20.8	19.3	11.6	6.9
2004	99.0	66.3	47.9	41.6	35.6	26.6	19.1	14.1	12.4	7.7	4.7
2005	98.6	72.1	52.0	45.1	38.3	27.7	19.4	14.7	13.2	8.6	5.5

% Finer



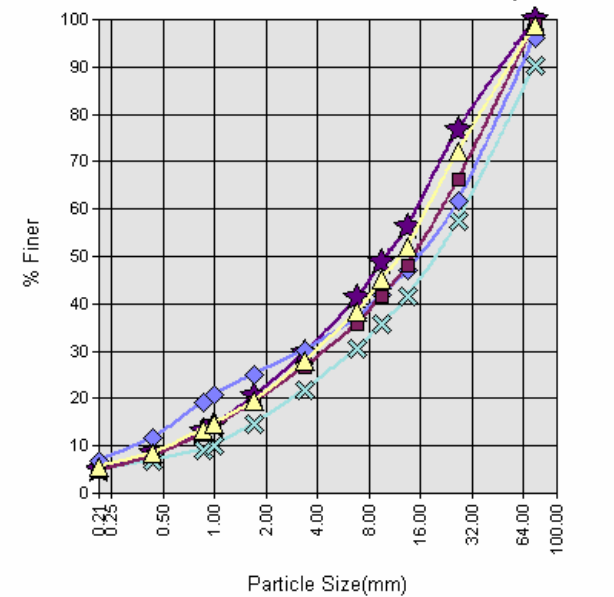
■ 6.75 ■ 1.7

Distribution of Fines by Class



■ 1.0 - 1.7 ■ .85 - 1.0 ■ .425 - .85
■ 2.12 - .425 ■ <.212

Cumulative Frequency Distribution



—x— 2001 —*— 2002 —◇— 2003 —■— 2004 —△— 2005

Data provided by Yakama Nation Fisheries 2007. Do not reproduce without permission of YN.