

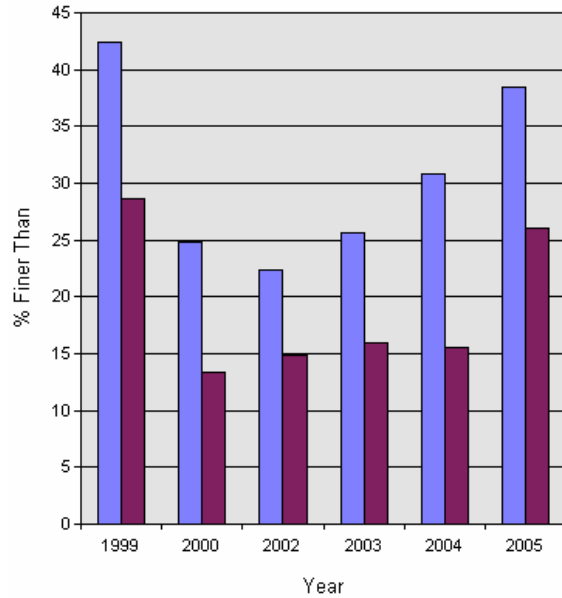
YKFP Klickitat Subbasin Sediment Monitoring Report



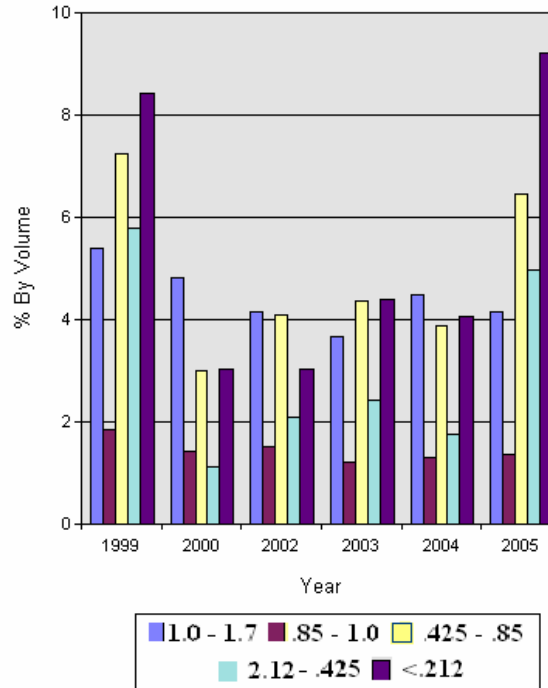
Site Name: Klickitat R. near Parrott's Crossing

Year:	%<75.0m	%<26.5mm	%<13.5m	%<9.5mm	%<6.73mm	%<3.35mm	%<1.7mm	%<1.0mm	%<0.85mm	%<0.425m	%<0.212m
1999	91.4	62.4	50.7	46.5	42.4	35.3	28.7	23.3	21.5	14.2	8.4
2000	79.8	43.8	32.2	28.0	24.8	19.2	13.4	8.6	7.2	4.2	3.0
2002	92.6	45.7	30.3	25.6	22.3	18.2	14.8	10.7	9.2	5.1	3.0
2003	81.8	44.2	33.2	29.0	25.6	20.4	16.0	12.3	11.1	6.8	4.4
2004	96.6	56.3	42.0	36.3	30.8	22.5	15.5	11.0	9.7	5.8	4.1
2005	93.1	63.2	48.3	43.0	38.4	31.4	26.1	22.0	20.6	14.2	9.2

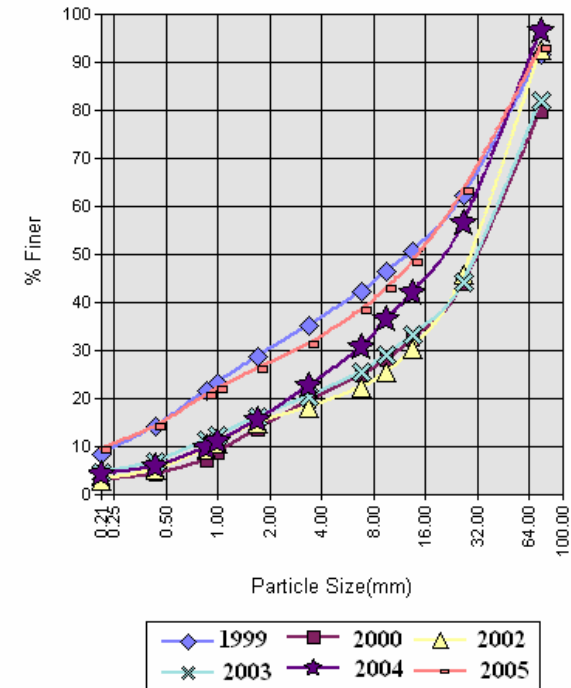
% Finer



Distribution of Fines by Class



Cumulative Frequency Distribution



Data provided by Yakama Nation Fisheries 2007. Do not reproduce without permission of YN.