

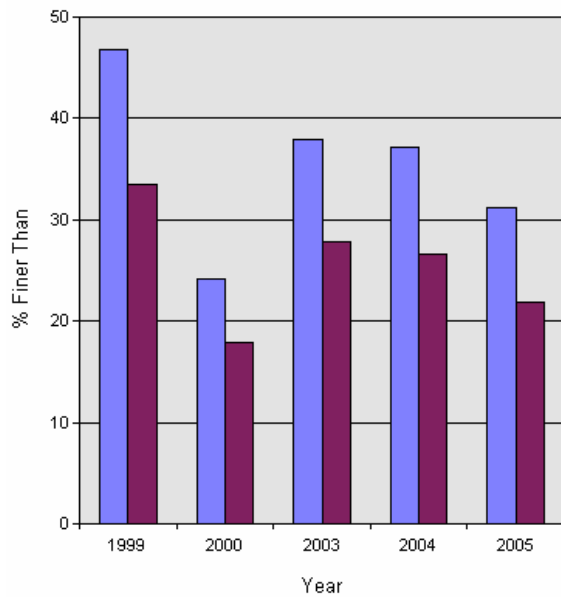
# YKFP Klickitat Subbasin Sediment Monitoring Report



## Site Name: Klickitat R. below Swale

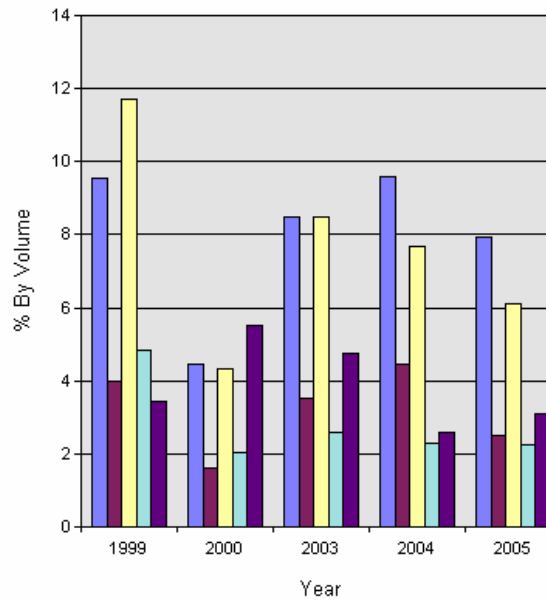
Year:	%<75.0m	%<26.5mm	%<13.5m	%<9.5mm	%<6.73mm	%<3.35mm	%<1.7mm	%<1.0mm	%<0.85mm	%<0.425m	%<0.212m
1999	100.0	71.6	56.6	51.3	46.8	40.3	33.5	23.9	20.0	8.3	3.4
2000	86.6	46.8	32.5	27.4	24.2	20.6	17.9	13.5	11.8	7.5	5.5
2003	94.9	65.2	46.9	41.9	37.9	32.8	27.8	19.4	15.8	7.4	4.8
2004	94.0	61.8	45.8	41.0	37.1	31.9	26.6	17.0	12.5	4.9	2.6
2005	88.3	54.8	39.7	35.1	31.2	26.3	21.8	13.9	11.4	5.3	3.1

% Finer



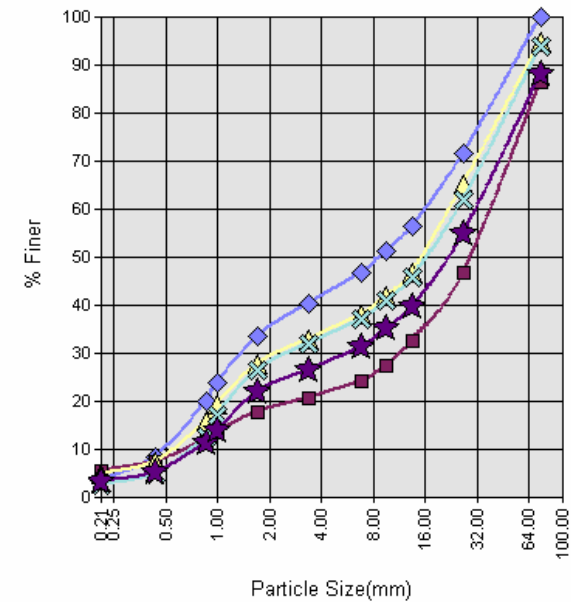
6.75 1.7

Distribution of Fines by Class



1.0 - 1.7 .85 - 1.0 .425 - .85  
2.12 - .425 <.212

Cumulative Frequency Distribution



1999 2000 2003  
2004 2005

# YKFP Klickitat Subbasin Sediment Monitoring Report

Thursday, September 28, 2006



Page